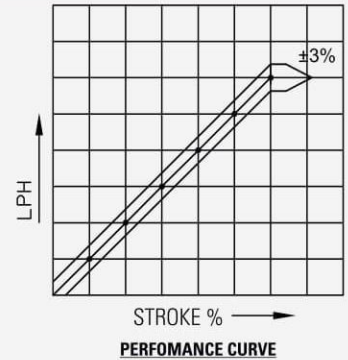




Model: VPL-04 Plunger Type Dosing Pumps



SELECTION CHART

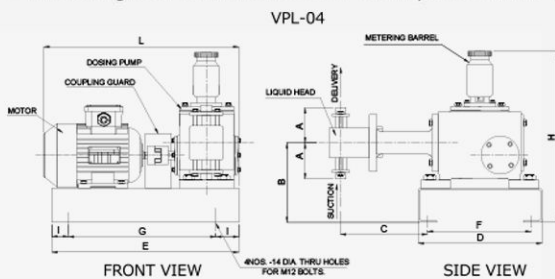
PUMP SPEED - 100 SPM (NOMINAL) GEAR RATIO 15:1 MOTOR 1500 RPM				PL. Dia mm	Max. Pr. Kg/cm ²	PUMP SPEED - 200 SPM (NOMINAL) GEAR RATIO 8:1 MOTOR 1500 RPM			
Cap LPH	Suc. Del. mm NB/BSP	% OF Max. Pr.	Motor K.W.			Cap LPH	Suc. Del. mm NB/BSP	% OF Max. Pr.	Motor K.W.
102	15	100	2.2	20	200	204	15	2.2	
147	25			24	200	293	25		
361	25			32	155	521	25		
407	25			40	100	815	25		
587	25	80	3.7	48	69	1173	40	3.7	
742	40			54	55	1485	40		
979	40			62	41	1957	40		
1074	40	50	5.5	65	37	2151	40	5.5	
1320	40			72	30	2639	40		
1400	40			74	28	2800	50		
1753	40			83	23	3506	80X50		
2061	40			90	19	4122	80X50		
2545	80X50			100	15	5089	80X50		
3080	80X50	30	5.5	110	12	6158	80X50		

MOC CHART

Sr. No.	Description	MOC	Sr. No.	Description	MOC
01	PLUNGER	SS304, SS316, SS304L, SS316L	01	Plunger Ring	PTFE
02	Liquid Head	SS304, SS316, alloy20	02	Gland Packing	PTFE
03	Throught Brush	SS304, SS316, alloy20	03	NRV Balls	SS, PTFE, Glass, Ceramic
04	Non return valve	SS304, SS316, alloy20, P.P, PVC, PTFE			

FEATURE

- Multiple head plunger pumps with common drive for mixing two or more liquid in a desired ratio. The ratio can be easily reset.
- The design & Performance of VPL Pumps conforms to API675



DIMENSIONS IN mm

A	B	C	D	E	F	G	H	I	L
95	310	190	525	800	475	600	690	100	870

WEIGHT (App) : 250 Kg • PACKING SIZE : 39X39X27 Inches