

VERITO ENGINEERING

www.veritoengineering.com



**Trustworthy Chemical
Process Mart**

About Us



Verito Engineering Pvt. Ltd. is an ISO 9001 : 2015 certified company engaged in designed & manufacturing of chemical dosing pumps, progressive cavity screw pump, high pressure triplex plunger pump, agitator/mixer and skid mounted packages/chemical dosing systems at Ahmedabad. The product manufactured by us are specially used in Water Treatment Plants (ETP, RO, STP, WTP) Oil & Gas Industries, Pharmaceuticals Industries, Power Industries, Chemicals & Fertilizers Industries, Paper Industries, Petrochemicals Industries, Food & Beverages Industries for dosing of different chemicals.

We have experienced process Engineering experts who have developed our own standards to achieve the best quality at most competitive prices. The 'Verito' is a brand name of the next generation, world class Chemical Process Mart. Our aim is to provide 100% reliable and quality product which will work consistently with highest satisfaction . Our commitment & ethics are our proud identities and base of our business.

The company has very strong performance track record of our equipments. We are regularly supplying to L&T, Alfa Laval, Ion Exchange, Shapoorji Pallonji, Thermax, Nalco, Arvind, Reliance, CHEMIC-TECH, Mazda, JSW, Suez Water, Chembond Chemicals, Aditya Birla, Tokyo Cement, Amul Dairy, NR Agarwal, GACL, Coca Cola, GFCL, Tamilnadu, Petro Products, Unittop Aquacare, Qatar Fertiliser Company, Saudi Marjan Industries Jeddah KSA, Sustainable Reliable Solutions UAE.

Our Network

Global Installations

- Malta
- Europe
- Dubai
- Malasiya
- Nigeria
- Africa
- UAE
- Bangladesh
- Qatar
- Srilanka
- Taiwan
- Ethiopia
- Russia
- UK

Applications:



Oil & Gas



Pharmaceuticals



Power



Chemicals & Fertilizers



Paper Industries



Water, Waste Water, Sewage



Petrochemicals



Food & Beverages

Electronic Dosing Pump

It is a positive displacement diaphragm metering pump operating at 230V, 50 Hz supply. It is base mountable. Solenoid pushes the diaphragm which in turn pushes the liquid into the system. Solenoid is actuated by a solid state electronic circuit. It has controls for the desire accuracy of the dosing.

Diaphragm:

Superior diaphragm is designed to ensure to long life even under the most demanding applications. We are using imported quality Solid PTFE diaphragm.

Electronic Circuit:

State of the art electronic circuit (protectively coated with epoxy) is virtually unaffected by temperature, magnetic fields& other electric disturbances.

MOC:

- PP, PVDF, PTFE & SS316, Alloy20



Applications:



Oil & Gas



Pharmaceuticals



Power



Chemicals & Fertilizers



Paper Industries



Water, Waste Water, Sewage



Petrochemicals



Food & Beverages

Electronic Dosing Pump



Salient features:

- Maintenance free
- Easy to operate
- Economical
- World class next generation Dosing Pumps
- Inbuilt Air Relief Valve
- Solid PTFE Diaphragm
- Double NRV Check Valves
- Less noise
- Minimum SPM
- Optionally Digital display of SPM available
- Optional Auto dosing - 4 to 20

Solenoid:

High quality, hot rated solenoid is designed to dissipate heat. Capacities & pressure do not derate even over extended use.

Technical specification:

1. Power Supply	230v AC, 50Hz
2. Power consumption at max. speed	40/80 Watt
3. Fuse	500mA / 230v Ac
4. Pump stroke per minute {adjustable}	120 Max
5. Negative Suction	1 Mtr
6. environment temperature	40°C Max
7. Capacity Max	30 Lph
8. Pressure Max	12 Kg.



Applications:



Oil & Gas



Pharmaceuticals



Power



Chemicals & Fertilizers



Paper Industries



Water, Waste Water, Sewage



Petrochemicals



Food & Beverages

Mechanically Actuated Diaphragm Pump

Type: Mechanically Actuated Diaphragm Pump

Flow rate: Flow rate - 0 to 300 LPH

Pressure Range: Up to 8 kg/cm²

Features:

- Light Weight and compact size
- Flow variation possible
- Chemical compatible MOC
- Zero leakage Metering Pump
- Poly Tetra Fluoro Ethylene Diaphragm for longer life
- Optimum power consumption pp p
- High Metering Accuracy
- Economical Dosing solution

Material Of Construction Of Wetted Parts

SS304, SS316, Hastalloy, Alloy20, PP, PVC, PTFE



Capacity

No.	Pump Model	Capacity (L.P.H.)	Max Pressure
1.	VMD-01	100	8
2.	VMD-02	200	8
3.	VMD-03	300	8

Applications:



Oil & Gas



Pharmaceuticals



Power



Chemicals & Fertilizers



Paper Industries



Water, Waste Water, Sewage



Petrochemicals



Food & Beverages

Standard of API - 675

Plunger Pump

Type: Plunger Metering Pump

Flow Rate: Flow rate - 0 to 7000 LPH,
Higher capacity can be achieved by multiplexing head.

Pressure Range: Stainless steel head
standard pressure up to 400 kg/cm².
Special head up to 1000kg/cm².



Features

- Heavy duty construction designed for several industrial environment.
- High volumetric efficiency.
- High metering accuracy.
- Automatic capacity control via pneumatic or electric signal on demand or through VFD.
- Low investment cost.
- Internal worm reduction gear.
- Oil bath lubrication for long life.
- Micrometric stroke adjustment while pump running or stopped.
- It requires low NPSH.
- Steady state metering accuracy (+ - 1%) of pump output.
- Simple & multiplex arrangement of pumps.



Material of Construction Offered:

SS 316, SS 316L, SS 304 Hastelloy,
Alloy-20 or any other machinable material.

Technical specification:

No.	Pump Model	Capacity (L.P.H.)	Max Pressure
1.	VPL-01	0 to 152	80 BAR
2.	VPL-02	0 to 761	99 BAR
3.	VPL-03	3 to 3000	230 BAR
4.	VPL-04	0 to 7000	400 BAR

**Customize Trolley Mounted
Plunger Type Metering Pump**

Applications:



Oil & Gas



Pharmaceuticals



Power



Chemicals &
Fertilizers



Paper Industries



Water, Waste
Water, Sewage



Petrochemicals



Food & Beverages

Standard of API - 675

Hydraulically Operated Diaphragm Pump

Type: Hydraulic Diaphragm Type Metering Pump.

Flow Rate: 0 to 7,000 litres per hour.

Higher capacity can be achieved by multiplexing head.

Pressure Range: Stainless steel head standard pressure up to 200 kg/cm². Special head up to 1000kg/cm².

Features

- Leak free design.
- All moving parts including plunger is running in oil.
- Diaphragm rupture detection system available.
- High metering accuracy.
- In built pressure relief valve in hydraulic circuit.
- Diaphragm life more than 20000 working hours.
- Automatic capacity control via pneumatic or electric signal on demand.

Material Of Construction Of Wetted Parts

SS 316, SS 316L, SS 304, Hastelloy, PP,PTFE(Teflon), PVS, Alloy-20 or other machinable Material

Automatic Flow Variation through Electrical Actuator



Types Of Head:

- 1) Simplex Hydraulic Diaphragm Pumps
- 2) Double Hydraulic Diaphragm Pumps
- 3) Duplex Hydraulic Diaphragm Pumps

Technical specification:

No.	Model	Capacity (L.P.H.)	Max Pressure
1.	VHYD - 01	0 to 152	45 BAR
2.	VHYD - 02	0 to 761	45 BAR
3.	VHYD - 03	0 to 3000	45 BAR
4.	VHYD - 04	0 to 6000	45 BAR

Temperature Range : Up To 250° C

Applications:



Oil & Gas



Pharmaceuticals



Power



Chemicals & Fertilizers



Paper Industries



Water, Waste Water, Sewage



Petrochemicals



Food & Beverages

Standard of API 676

Progressive Cavity Screw Pump

Latest & modified designed of Progressive cavity screw pump to handle viscous, Non-viscous, abrasive & N-abrasive slurry / media for filter, dosing & transfer application.

Typical Applications

Loading & Unloading, Transfer, polymer Feed, Dewatering, Sludge Transfer, Chemical Feed, Centrifuge Charging, Filter - Press Charging, Kiln Charging & Drainage, Meeting, Pit Emptying, Metering.

Typical Industries

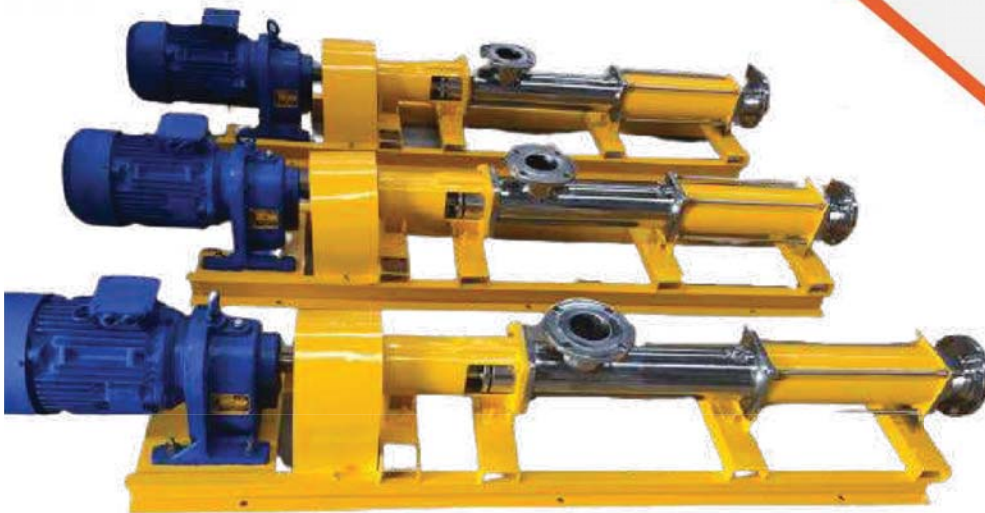
Water treatments plants, Oil & Gas, Chemical, Food process & Production, Petrochemical Process, Sewage Treatment Plants.

Maximum performance data

Capacity : upto 100000 lph
Diff. Pressure : upto 6 Kg/cm²

Operating parameters

Viscosity : 1 to 100000 cSt
Fluid Temperature 120°C



Applications:



Oil & Gas



Pharmaceuticals



Power



Chemicals &
Fertilizers



Paper Industries



Water, Waste
Water, Sewage



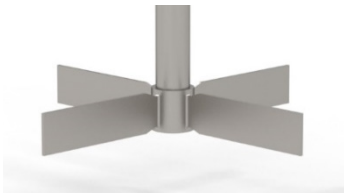
Petrochemicals



Food & Beverages

Pitch Blade Turbine

- Designed for axial flow, ideal for a broad range of viscosity levels (up to 5,000 cP) in processes.
- Excellently suited for tasks involving blending, solid suspension where high shear is required.
- Available in three, four or six bladed impeller design, with customized pitch angle & Single / multistage impeller arrangement.

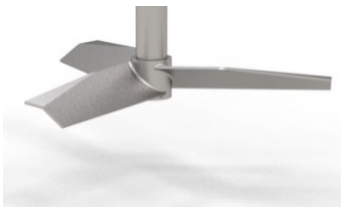


Flat Blade Turbine

- Designed for Radial flow & High Shear (laminar regime applications)
- Excellent for low-liquid-level solids suspension applications.
- Available in three, four or six bladed impeller design, with customized pitch angle.

Propeller

- Marine style axial flow design with energy efficient.
- Ideal for small batch size
- Excellent for mixing, homogenization, and suspension applications

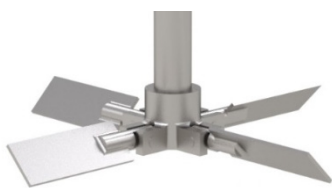


Hydrofoil Impeller

- Widely recognized as the industry norm for axial flow impellers.
- Offers Exceptional mixing efficiency for fluids of low to moderate viscosity.
- Well-suited for tasks involving blending, heat transfer, and suspending solids.

Wide Foil Impeller

- Designed for Axial flow with excellent performance
- Ideal for requirements of solid suspension, homogenization.
- Offers high efficiency and low Shear

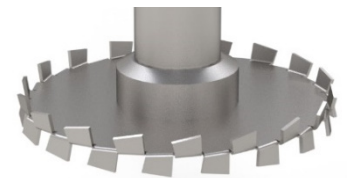


Folding Impellers (Folding blade Turbine)

- Designed for axial flow, mixing scenarios where accessing the vessel is restricted, commonly observed with 1000 Liter or 2000 Liter IBC totes.
- Excellently suited for tasks involving blending.
- Capability are similar to the pitch blade turbine

High Shear Disc (Cowles Disc Impeller)

- Sawblade configuration contributes to mixing by producing high shear forces.
- Ideal for blending powders, dispersing fine solids, disintegrating agglomerations (clumps), and forming emulsions.



Applications:



Oil & Gas



Pharmaceuticals



Power



Chemicals &
Fertilizers



Paper Industries



Water, Waste
Water, Sewage



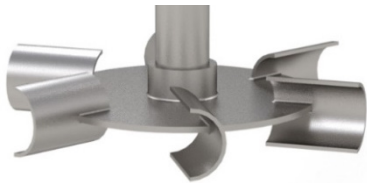
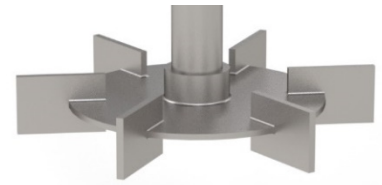
Petrochemicals



Food & Beverages

Rushton Turbine (Radial Disc Impeller)

- Traditional design produces a basic radial flow pattern.
- Ideal for requirements of Gas/liquid dispersion.
- A cost-effective design for low gas rates or concentrations of immiscible liquids

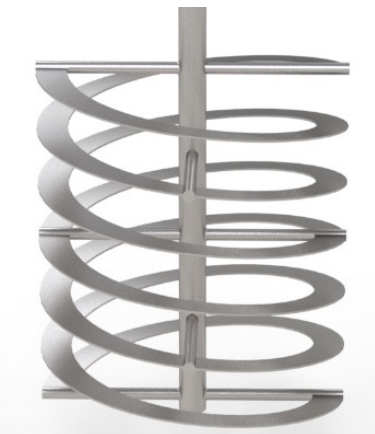


Concave Disc Turbine (Smith Impeller)

- Improved version of Rushton Turbine with improved efficiency.
- Designed to produce a strong radial flow pattern.
- Ideal for requirements of Gas/liquid dispersion.
- Gas dispersing capability over two times that of the Rushton Turbine.

Anchor Impeller

- Most economical impeller for achieving laminar flow Designed to produce a strong radial flow pattern.
- Ideal for requirements of blending and heat transfer of highly viscous liquid.
- Available with optional wall scrapers to solve heat transfer fouling.



Helix Impeller

- Designed to produce Axial flow through helix shape.
- Ideal for requirements of blending a high viscosity, laminar flow.
- Highly effective in heat transfer.
- Capable of handling higher viscosities over 30,000 cP.
- Available with optional bottom standard anchor/sweeper.

Parabolic Impeller

- Designed for Axial flow with excellent performance through arrangement of parabolic shape.
- Ideal for requirements of High Viscosity Mixing & heat transfer.
- Capable of handling higher viscosities over 30,000 cP.
- Reduces the Mixing Time.
- Available with optional bottom standard anchor/sweeper.



Applications:



Oil & Gas



Pharmaceuticals



Power



Chemicals &
Fertilizers



Paper Industries



Water, Waste
Water, Sewage



Petrochemicals



Food & Beverages

Impeller Selection Guide

Impeller	Application
Pitch Blade Turbine	Miscible/ Immiscible Fluid Blending, Dispersion, Solid Suspension
Flat Blade Turbine	Blending near Tank bottom, Low Liquid Level Solid suspension
Propeller	Small Batch Blending (Low Viscosity)
Hydrofoil Impeller	Miscible Fluid Blending, Solid Suspension, Heat Transfer
WideFoil Impeller	Solid Suspension, Three Phase Process
Folding Impellers	Blending (Recommended for Narrow Opening)
Cowles Disc	Liquid-Liquid Dispersion, Solid-Liquid Dispersion, Local Shear
Rushton Turbine	Gas Dispersion
Concave Disc Turbine	Gas Dispersion, Intermediate & High gas flow
Anchor Impeller	High Viscosity Blending, Heat Transfer in viscous media
Helix Impeller/ Parabolic Impeller	High Viscosity Mixing with rapid blend time, Heat Transfer in viscous media

Blending Intensity Level Chart for Blending (ChemScale)

Intensity (ChemScale)	Maximum S.G. Difference	Viscosity Ratio	Blending Description & Typical Applications
1-2	<0.2	<100	<ul style="list-style-type: none"> Mild/minimum blending and fluid barely in motion. Long blend time. Storage tanks, holding tanks, feed tanks & non-critical blending operations.
3-5	<0.5	<500	<ul style="list-style-type: none"> Moderate blending of miscible fluids. surface rippling at low viscosities. Blend tanks, make-up tanks, non-critical heat transfer & reaction tanks.
6-8	<0.8	<5,000	<ul style="list-style-type: none"> Vigorous agitation for homogeneity of miscible fluids. Surging surface, some vortexing rapid blend times & good heat transfer. Tanks with pH feedback, critical reaction tanks & most heat transfer
9-10	<1.0	<10,000	<ul style="list-style-type: none"> Violent agitation for homogeneity of miscible fluids. Surface splashing and Vortexing, Shorter Blend Time. Critical reaction tanks, critical heat transfer, high shear requirements.

Solid Suspension Intensity Chart

Intensity	Description
Solids Motion	Solids are allowed to settle on the vessel bottom, but remain in motion.
Solids Just Suspended	The particles that settle the fastest barely rise above the vessel bottom, while others rise higher. Fillets will appear in the corners of the vessel. When only bottom pump-out is available, or when time is not a factor, use for dissolving solids applications.
Off Bottom Suspension/ Complete Suspension	Suitable for the vast majority of storage applications. The bottom quadrant of the tank has moderate homogeneity of solids. Excellent for bottom draw-off applications. Suspension is continuous.
Uniform Suspension	Solids are distributed uniformly across the liquid volume.

Applications:



Oil & Gas



Pharmaceuticals



Power



Chemicals & Fertilizers



Paper Industries



Water, Waste Water, Sewage



Petrochemicals



Food & Beverages

Knowledge Hub-Agitator

International Installations



It's not just a mixing but a Technology

Know more about mixing Technology

These mixer agitators are comes in several specifications as per the need of our customers. The offered mixer agitators are tested from our end in order to deliver a defect free range to customer's end. Our mixer agitators are developed with quality material under the direction of skilled professionals.

We ensure the highest quality & performance of our Agitators. At the same time, we have a very strong performance track record of supplying various types of agitators for various applications.

➤ Ask more to our Agitator Design Experts

- Tip Speed
- Pumping Capacity
- Detention Time
- ChemScale
- Velocity gradient
- Torque
- Specific Power
- Material of Construction

➤ Agitator Manufacturing Champions

- Accuracy of Machining
- Lathe Machine, CNC, VMC
- Qualified & Approved Welding Procedures

➤ Tests Conducted by the Verito Quality Specialties

Performance

- Run Trail
- Noise
- Vibration
- RPM
- Current

Dimensional

- Run Out
- DFT
- Dimensions
- Dynamic & Static Balancing

Chemical & Mechanical

- UT
- PMI
- DP
- PT

➤ Final Assembly

- We care about the Aesthetics of our Products

Applications:



Oil & Gas



Pharmaceuticals



Power



Chemicals & Fertilizers



Paper Industries



Water, Waste Water, Sewage



Petrochemicals



Food & Beverages

Agitator / Mixer

Types :

- Turbine
- Hydrofoil
- Propeller
- Paddle
- Flocculator
- Anchor
- Rusthon Turbine
- Trapecoidal
- Dispersion Turbine
- S Curve Blade Turbine
- ZETA Impeller
- Sigma Impeller
- Alpha Impeller

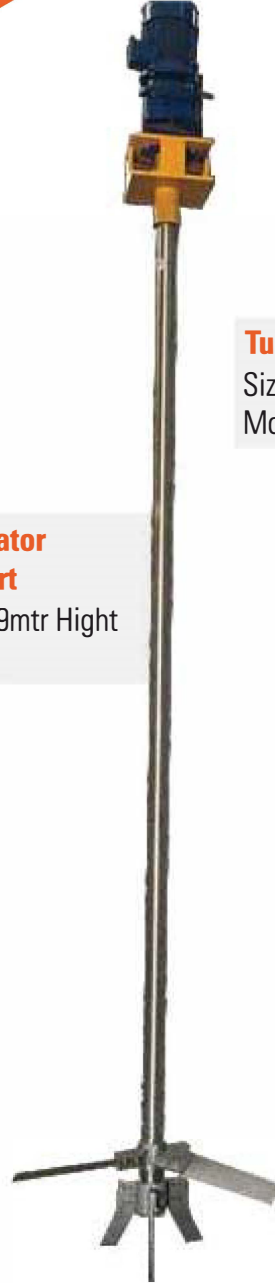


Paddle Type Flocculator

Size - 125mm Dia x 5.5mtr Hight
Moc - SS-316

Propeller Type Agitator With Bottom Support

Size - 130mm Dia x 5.9mtr Hight
Moc - SS-316



Turbine Type Agitator

Size - 150mm Dia x 7.3mtr Hight
Moc - MSRL



Applications:



Oil & Gas



Pharmaceuticals



Power



Chemicals &
Fertilizers



Paper Industries



Water, Waste
Water, Sewage



Petrochemicals



Food & Beverages

Reactor Agitators

- The reactor agitators are the most powerful agitators compared to the others in Verito's product range.
- These Agitator are specially designed to serves the purpose of facilitating the chemical reaction, which is carried out with precise and meticulously calculated reaction times for which vigorous stirring is required.
- Since the reactors operates at high temperature and pressure for this reason, mechanical seal is often installed to maintain constant pressure or prevent the internal dangerous Liquid/gases from dispersing.

Key Technical Parameters

- Motor Power - 1.5-100 kW
- Shaft Diameter - 30-300 mm
- Operating Pressure - Vacuum – 200 bar
- Impeller Type - High Efficiency Impeller, Propeller, Hydrofoil, Alpha impeller
- Materials (Wetted Parts) - SS316, SS316L, CS, Nickel Base Alloy, Duplex & Super Duplex Steel, Titanium Alloy

Feature

- Robust designs of lantern support available.
- Available with different types of gearbox (Inline Helical, Planetary, Bevel)



Applications:



Oil & Gas



Pharmaceuticals



Power



Chemicals & Fertilizers



Paper Industries



Water, Waste Water, Sewage



Petrochemicals



Food & Beverages

Heavy Duty Agitators

- Heavy Duty Agitators are designed for large volume Vessels which are reliable for most demanding heavy industrial applications, from pharmaceutical fermentation, hydrogenation, bio digesters, chemical reactors, resins, large-scale chemical processing to minerals processing and heavy sludge waste treatment.
- Radial and axial loads on the drive are completely absorbed by a separate double bearing section and the flexible coupling connecting the mixer shaft to the drive. These Heavy Duty Industrial mixer has a rigid torsion-free Bearing housing.
- This robust construction and the precision of its running characteristics guarantee the durability of the shaft.

Key Technical Parameters

- Motor Power - 10-200 kW
- Shaft Diameter - 60-300 mm
- Operating Pressure - 0 – 50 bar
- Impeller Type - Turbine, Propeller, Hydrofoil
- Materials (Wetted Parts) - MS, EN-8, SS304, SS316, SS316L, Nickel Base Alloy, Duplex & Super Duplex Steel, (Comes with Various Lining RL, FRP, PP, PTFE)

Feature

- Robust torsion-free designs of lantern support available.
- Available with different types of gearbox (Inline Helical, Planetary, Bevel)



Applications:



Oil & Gas



Pharmaceuticals



Power



Chemicals & Fertilizers



Paper Industries



Water, Waste Water, Sewage



Petrochemicals



Food & Beverages

Flocculators

- Flocculators provides gentle agitation by slow moving paddles. This action serves to break up the mass rotation of liquid and promote mixing.
- The specially designed flocculating paddles enhance flocculation of the feed solids. Low tip speeds create a gentle rotary mixing which promotes floc development. Increased particle contact will promote floc growth and aids faster settling.
- Low tip speeds provide gentle mixing and minimize shearing action on established floc. Flocculators of various sizes and material of construction are available as per the application.

Key Technical Parameters

- Motor Power - 0.37-100 kW
- Shaft Diameter - 25-200 mm
- Operating Pressure - Atmospheric
- Impeller Type - Paddle, Anchor, Rushton turbine
- Materials (Wetted Parts) - MS, EN-8, SS304, SS316, SS316L, Nickel Base Alloy, Duplex & Super Duplex Steel, (Comes with Various Lining RL, FRP, PP, PTFE)

Feature

- Robust torsion-free designs of lantern support available.
- Available with different types of gearbox (Inline Helical, Planetary, Bevel)



Applications:



Oil & Gas



Pharmaceuticals



Power



Chemicals & Fertilizers



Paper Industries



Water, Waste Water, Sewage



Petrochemicals



Food & Beverages

Light Duty Agitator

- Light duty top entry agitators are the best fit for applications with small volume tank like Coagulation, WTP, ETP, yeast fermentation, starch storage, storage and blending of concentrated fruit juices, bitumen, paint production, sanitary or pharmaceutical applications and many more.
- This design of mixer which operates at speeds in range of 60-250 rpm is very suitable for mixing of different liquids, dissolving of solids in liquid, dispersion, Homogenous and emulsifying duties.

Key Technical Parameters

- Motor Power - 0.37-100 kW
- Shaft Diameter - 25-200 mm
- Operating Pressure - Atmospheric
- Impeller Type - Turbine, Propeller, Hydrofoil, Flat Blade Turbine, Sigma Impeller
- Materials (Wetted Parts) - MS, EN-8, SS304, SS316, SS316L, Duplex & Super Duplex Steel, (Comes with Various Lining RL, FRP, PP, PTFE)

Feature

- High Efficient Impellers.
- Available with different types of gearbox (Inline Helical, Planetary, Bevel)



Applications:



Oil & Gas



Pharmaceuticals



Power



Chemicals & Fertilizers



Paper Industries



Water, Waste Water, Sewage



Petrochemicals



Food & Beverages

High Speed Agitators

- Verito's direct driven Agitator type is an innovatively designed top flange agitator for use in the food and pharmaceutical industries. It is a mixer without gearbox, so there is no oil/lubricants leakage which could contaminate your product.
- The mixer shaft is directly fitted directly into the drive, eliminating the need for an extra shaft coupling. The High-Speed Agitator are a strong and practically maintenance-free mixer which makes it a perfect solution for applications in the food and pharmaceutical industry. It is suitable for frequency converter-controlled operation.

Key Technical Parameters

- Motor Power - 0.1-15 kW
- Shaft Diameter - 30-300 mm
- Operating Pressure - Vacuum – 200 bar
- Impeller Type - High Efficiency Impeller, Propeller, Hydrofoil, Alpha impeller, Turbine, Cowles Disk
- Materials (Wetted Parts) - MS, EN8, SS316, SS316L, CS, Duplex & Super Duplex Steel

Feature

- Easy To install
- Maintenance Free Design



Applications:



Oil & Gas



Pharmaceuticals



Power



Chemicals & Fertilizers



Paper Industries



Water, Waste Water, Sewage



Petrochemicals



Food & Beverages

This retrieval tool for an injection quill is specifically engineered to eliminate the need to depressurize or divert the process line fluid while retrieving the quill. This can be useful when dealing with chemicals that are prone to clogging, such as sodium hypochlorite, ammonia, and polymer.

This feature is particularly valuable in scenarios where the preservation of specific pressure levels is crucial for the proper functioning and integrity of the system. The tool's dual functionality enhances operational efficiency and safety in processes that demand precise pressure control.

Specifications:

Type : Tee Type, Retrievable, Access Fitting

Material Of Construction: SS304, SS304L, SS316, SS316L, Super Duplex Stainless Steel, Hast Alloy, Inconel Alloy, Special Alloy.

Operating Pressure: 0 - 250 Bar Max.

Design Temp: -20°C to 200°C

Certificates:

- (I) Type 3.1 - EN10204 For Pressure Containing Parts
- (II) Type 2.2- EN10204 For Non-Pressure Containing Parts + Gaskets, Seals, Cover, Etc.)

Maximum Pipe Line Size: designed upto 40"

Retrieval Tool Overall Length: designed upto 2800 mm

Code Compliant: ASME, code B31.3, ISO

Features:

- Can be used with multiple injection quill
- Top-Wheel Manipulation to Allow Safe Operation.
- Compact design to allow retrieval in minimum clearance areas.
- Lightweight construction for single person operation.
- Ensures effective sealing when closing the valve, preventing leaks and maintaining the integrity of the system.
- Engineered to handle high pressure ratings
- Incorporates safety features such as locking mechanisms to prevent accidental releases and ensure secure operation.



Applications:



Oil & Gas



Pharmaceuticals



Power



Chemicals &
Fertilizers



Paper Industries



Water, Waste
Water, Sewage



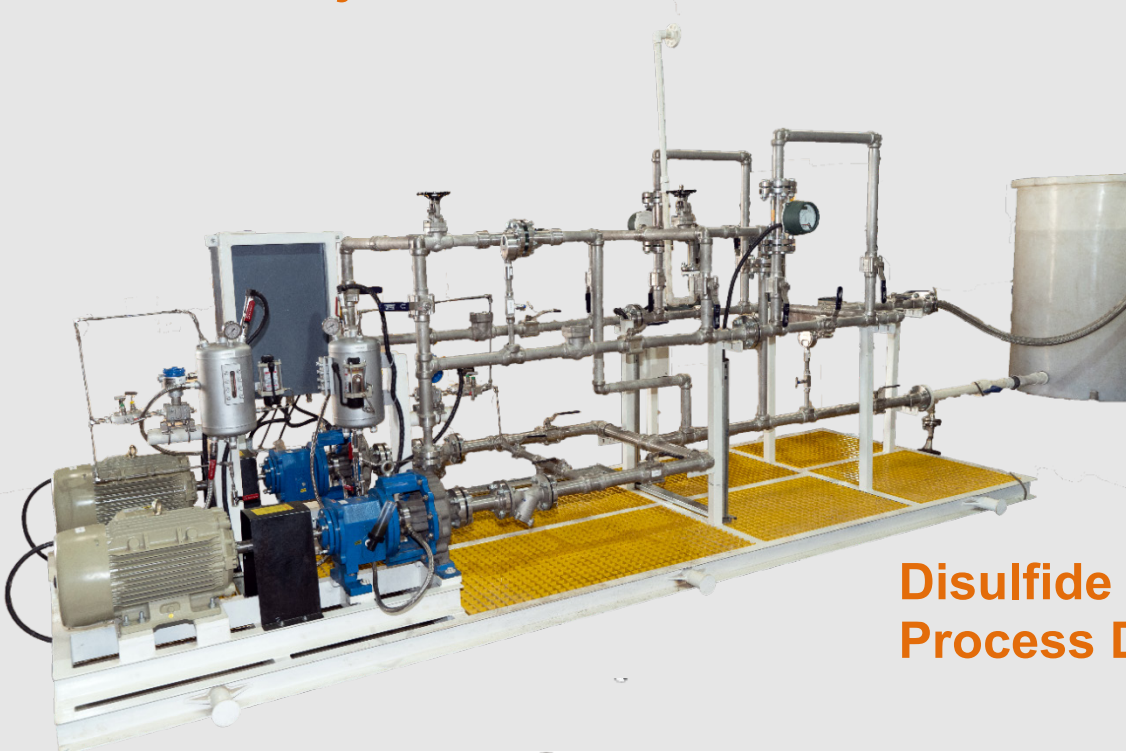
Petrochemicals



Food & Beverages

Skid Mounted Packages - Petroleum Refinery Industries

Project: Reliance Industries Limited



Disulfide Oil (DSO)
Process Dosing Skid

Project: Saudi Aramco,
Saudi Arabia

Dimethyl Disulfide (DMDS)
Dosing Skid



Applications: _____



Oil & Gas



Pharmaceuticals



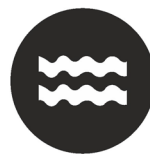
Power



Chemicals &
Fertilizers



Paper Industries



Water, Waste
Water, Sewage



Petrochemicals



Food & Beverages

Fully Automatic Injection Packages

Project: Tawke Gas Injection Facility, AGI EPC Project, Iran (DNO)



Corrosion inhibitor Injection package



Ph Correction Injection package

Applications:



Oil & Gas



Pharmaceuticals



Power



Chemicals & Fertilizers



Paper Industries



Water, Waste Water, Sewage



Petrochemicals



Food & Beverages

Anti-Bleeding Chemical Injection Package

Project: L2 Black Fiber, Indonesia



Applications:



Oil & Gas



Pharmaceuticals



Power



Chemicals &



Paper Industries



Water, Waste



Petrochemicals



Food & Beverages

VERITO
ENGINEERING



www.veritoengineering.com

Mercaptan Dosing System

PROJECT: INDIAN OIL CORPORATION LTD, KOCHI



PROJECT- AEGIS VOPAK TERMINALS LTD.,
RAJULA AMRELI

Applications: _____



Oil & Gas



Pharmaceuticals



Power



Chemicals &
Fertilizers



Paper Industries



Water, Waste
Water, Sewage



Petrochemicals



Food & Beverages

LP-HP Dosing System

Project: Coca Cola Company, (Thermax)



LP Dosing System



HP Dosing System

Applications:



Oil & Gas



Pharmaceuticals



Power



Chemicals &
Fertilizers



Paper Industries



Water, Waste
Water, Sewage



Petrochemicals



Food & Beverages

Auto-Poly Dosing System



PROJECT: PERSTORP AB

PROJECT: PICSON CONSTRUCTION
EQUIPMENT'S PVT. LTD, VADODARA



Applications:



Oil & Gas



Pharmaceuticals



Power



Chemicals &
Fertilizers



Paper Industries



Water, Waste
Water, Sewage



Petrochemicals



Food & Beverages

Skid Mounted Injection Packages / Chemical Dosing Systems

Additive Injection Package For Jet Fuel System - Supplied to Europe



Automatic Polyelectrolite Dosing System - Supplied to Africa



Applications:



Oil & Gas



Pharmaceuticals



Power



Chemicals & Fertilizers



Paper Industries



Water, Waste Water, Sewage



Petrochemicals



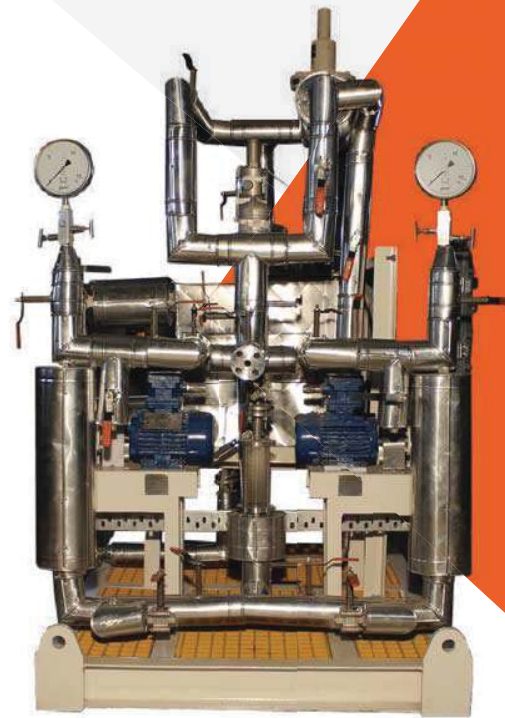
Food & Beverages



LP/HP Dosing System

Stadis Injection Package

- Heat tracing with rockwool insulation cladding.
- Friendly to operate in European atmosphere.



Applications:



Oil & Gas



Pharmaceuticals



Power



Chemicals &
Fertilizers



Paper Industries



Water, Waste
Water, Sewage



Petrochemicals



Food & Beverages



Multiple Chemical Dosing Systems under the one Roof

System House Of

- Ferric Chloride Dosing System
- Poly-electrolyte Dosing System
- PAC Dosing System



Applications:



Oil & Gas



Pharmaceuticals



Power



Chemicals & Fertilizers



Paper Industries



Water, Waste Water, Sewage



Petrochemicals



Food & Beverages

Octain Booster Injection Package



Lime Dosing System



Applications:



Oil & Gas



Pharmaceuticals



Power



Chemicals & Fertilizers



Paper Industries



Water, Waste Water, Sewage



Petrochemicals



Food & Beverages

PH Booster

Auto pH Booster for RO is a rigorous blend of alkalinity builder, softening agent and synthetic organic sludge conditioner. It counteracts the fall in pH in the permeate water due to removal of salts. It is highly compatible and ready to use composition for portable applications.

We offer premium quality pH booster for use in RO system. It is uniquely formulated, multi functional Liquid, manufactured specifically for low hardness softness water and demineralized water.

Product Features

- Eco- friendly
- Highly efficient
- Highly effective
- Fast results
- Biodegradable
- Cost competitive
- Auto Dosing through dosing pump
- Digital display for PH transmitter/PID controller and Dosing pump
- Chemical compatibility for sensing probe



Specification:

Range	0 to 14.00 pH
Resolution	0.01 pH
Accuracy	0.02 pH
Operating Temp.	14 to 70° c
Power Supply	230V

Applications:



Oil & Gas



Pharmaceuticals



Power



Chemicals & Fertilizers



Paper Industries



Water, Waste Water, Sewage



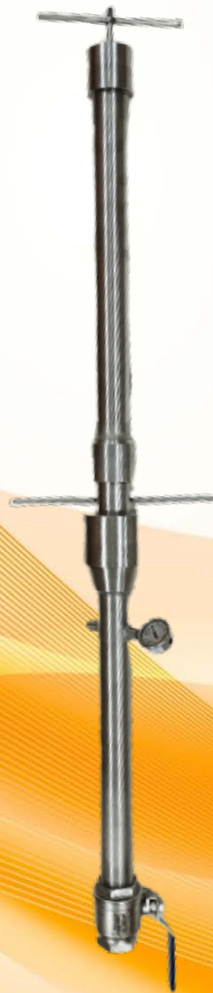
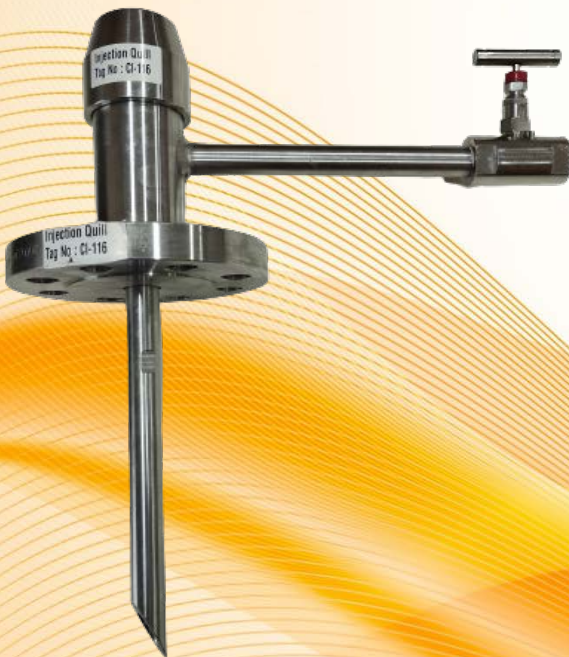
Petrochemicals



Food & Beverages

Injection Quill & Retrieval Tool

International Installations



Expert & Specialist in Industrial Chemical Injection Technology

Know more about Chemical Injection Technology

We possess unique qualifications for enhancing injection performance, attributed to our extensive knowledge of Chemical Injection. Combined with decades of experience in code injection quill design and fabrication, we offer unparalleled technical proficiency and advanced manufacturing capabilities.

Our comprehensive range includes customizable retrievable injectors and quills, manufactured with high quality and diverse materials, including specialty alloys.

➤ Ask more to our Design Experts

- Wake Frequency
- Thermal Stress
- Pressure Stress
- Pressure Drop
- Flow Rate
- Velocity
- Quill Diameter & Length
- Material of Construction

➤ Agitator Manufacturing Champions

- Accuracy of Machining
- Lathe Machine, CNC, VMC
- Follows High Quality manufacturing Code
- Qualified & Approved Welding Procedures

➤ Tests Conducted by the Verito Quality Specialties

Performance

- Hydrostatic
- Vibration

Dimensional

- Visual
- Dimensions
- DFT

Chemical & Mechanical

- UT
- PMI
- Liquid penetrant
- Radiography
- Hardness Test

➤ Final Assembly

- We care about the Aesthetics of our Products

Applications:



Oil & Gas



Pharmaceuticals



Power



Chemicals & Fertilizers



Paper Industries



Water, Waste Water, Sewage



Petrochemicals



Food & Beverages

Injection Quills with Double Block & Bleed Valve

In modern applications, it's often necessary to sample process fluid or inject chemicals directly into the process stream at full pressures and temperatures.

Verito offers a variety of Double Block and Bleed Valves, including one-piece body DBB, Modular Type, Monoflange Valves, and Manifold Valves, which can be equipped with Injection Quills or Sampling Probes.

These units, tailored to meet specific application needs, may include an Integral Check Valve to prevent backflow into the process stream.

Specifications:

Type : Non-Tee Type, Double Block & Bleed Valves

Material Of Construction: SS304, SS304L, SS316, SS316L, Super Duplex Stainless Steel, Hast Alloy, Inconel Alloy, Special Alloy.

Operating Pressure: 0 - 200 Bar Max.

Design Temp: -20°C to 200°C

Process Connection: Flanged, class 150 to 2500, ASME B16.5

Inlet Connection: Flange, threaded or weld.

Certificates:

- (I) Type 3.1 - EN10204 For Pressure Containing Parts
- (II) Type 2.2- EN10204 For Non-Pressure Containing Parts + Gaskets, Seals, Cover, Etc.)

Location / Orientation: Top of Pipe (12'O Clock & 2'O Clock Position)

Injection Quill Size: upto 3"

Quill Length: upto 1000 mm

Code Compliant: ASME, code B31.3, ISO



Features:

- Enhanced safety through the utilization of metal-enclosed double block valve.
- Compact design
- Reduced leakage points & Leak-tightness tested in conformity with BS6755/ISO 5208 with an A-level leakage rate.
- Can be Offered with customizable arrangement
- Ease in installation and maintenance

Applications:



Oil & Gas



Pharmaceuticals



Power



Chemicals & Fertilizers



Paper Industries



Water, Waste Water, Sewage



Petrochemicals



Food & Beverages

Injection Quill with Access Fitting

Our range of retrievable products, intended for chemical injection or sampling purposes, aims to eliminate the necessity of depressurizing or redirecting the fluid in the process line during the retrieval of the injector or quill.

Access fittings are employed alongside our retrieval tool and service valve, accommodating working pressures of up to 6000 psi (414 bar).

Verito's retrievable injection quill, retrieval tool, and service valve can be seamlessly interchanged with standard equipment used in the industry.

Specifications:

Type : Tee Type, Retrievable, Access Fitting

Material Of Construction: SS304, SS304L, SS316, SS316L, Super Duplex Stainless Steel, Hast Alloy, Inconel Alloy, Special Alloy.

Operating Pressure: 0 - 200 Bar Max.

Design Temp: -20°C to 200°C

Process Connection: Flanged, class 150 to 2500, ASME B16.5

Side Tee Connection: Flange, threaded or weld.

Certificates:

- (I) Type 3.1 - EN10204 For Pressure Containing Parts
- (II) Type 2.2- EN10204 For Non-Pressure Containing Parts + Gaskets, Seals, Cover, Etc.)

Location / Orientation: Top of Pipe (12'O Clock & 2'O Clock Position)

Injection Quill Size: upto 3"

Quill Length: upto 1070 mm

Code Compliant: ASME, code B31.3, ISO

Features:

- Customizable Option available at inlet (Shut-Off)
- Compact design
- Reduced leakage points & Leak-tightness tested in conformity with BS6755/ISO 5208 with an A-level leakage rate.
- Ease in installation and maintenance
- Inbuilt NRV
- Durability for High Pressure.

Applications:



Oil & Gas



Pharmaceuticals



Power



Chemicals & Fertilizers



Paper Industries



Water, Waste Water, Sewage



Petrochemicals



Food & Beverages



Dampner :



Use : To Reduce Pulsation

Material of construction : SS 304, SS316, PP, MS + PTFE, MS+ EP, PTFE, PVC

Capacity : Up to 13 ltr.

Type : Volume bottle

End connection : Screwed, Flanged

Pressure Safety Valve:

Use : For Safety of pump and pipe line damage due to excess pressure

Material of construction : SS304, SS316, PP, PTFE

Type : Spring Loaded

End connection : Screwed, Flanged



Applications:



Oil & Gas



Pharmaceuticals



Power



Chemicals & Fertilizers



Paper Industries



Water, Waste Water, Sewage



Petrochemicals



Food & Beverages

STRAINERS



Magnetic Strainer

Specifications

- **Sizes:** 1" to 48"
- **Materials of Construction:** Carbon steel, Stainless steel, Mild Steel
- **Mesh sizes:** 10 mesh to 400 mesh
- **Connection types:** Flanged, Threaded, Butt-weld
- **Pressure ratings:** ANSI Class 150 to 2500, PN10 to PN250

Strainers are essential components in many industrial processes that involve the transfer of fluids. They are used to remove debris, particles, and impurities from the flowing fluid to protect downstream equipment from damage and clogging. Strainers come in various designs, materials, and sizes to suit different applications and flow rates.

Verito Strainer range includes the following types:

- 1) Magnetic Strainer
- 2) Basket Strainer
- 3) Y-Strainer



Basket Strainer



Y-Strainer

Features and Benefits:

- Reliable protection for downstream equipment
- Cost-effective solution for debris removal
- Easy installation and maintenance
- Wide range of sizes, materials, and designs
- Can be customized to suit specific requirements

Applications:



Oil & Gas



Pharmaceuticals



Power



Chemicals & Fertilizers



Paper Industries



Water, Waste Water, Sewage



Petrochemicals



Food & Beverages

Strainer



Use : Y type Strainers protect your fluid handling systems against damage that that can occur to valves, traps, pumps diaphragm & other equipment when foreign matter such as dirt scale or welding particles travel through the pipeline.

Material of construction : SS 304, SS316, PP, MS+PTFE

Size : ½" to 6"

Type : "Y" types

End connection : Up to 1½" Screwed end above 2" Flanged end.

Anti-Siphoning Valves

- Use :**
- 1) Anti-Siphon valves allow water to flow only in one direction.
 - 2) In metering pumps require back pressure outputs in both low pressure or open discharge applications.
 - 3) Siphoning of chemical can occur when the discharge point is downhill or operating at negative system pressures. Anti-Siphon protections allows accurate pump operation in these conditons.
 - 4) Inject of fluid in to pressurised line.

Material of construction : SS304, SS316, PP, PTFE, PVC

End connection : Screwed, Flanged

Applications:



Oil & Gas



Pharmaceuticals



Power



Chemicals & Fertilizers



Paper Industries



Water, Waste Water, Sewage



Petrochemicals



Food & Beverages

Relax! Once you order to Verito!!!

- 1) Experience Process Engineering Experts
- 2) World Class Products
- 3) High Tech Performance
- 4) Advance Testing Procedure
- 5) Attractive Aesthetic Look
- 6) Very Competitive Pricing
- 7) The Shortest Delivery Period
- 8) Prompt Responses By Team Verito
- 9) Strong Technical Support
- 10) Unconditional Services
- 11) Time Bound Service At Site.
- 12) We Value The Relation More Than Business.

Finally Verito - A name of satisfaction

We Serve

- Kazakhstan
- Russia
- Egypt
- Iraq
- Nigeria
- Kuwait
- Abu Dhabi
- India
- Sri Lanka
- Nepal
- Bhutan
- Bangladesh
- Myanmar
- Malaysia
- Iran
- Pakistan
- Thailand
- Ethiopia
- Colombia
- Chile
- Kenya
- South Africa
- Indonesia



Verito Engineering Private Limited
ISO 9001:2015 Certified Company



 Plot No-02, Near Express Highway, Ramol, Vatva GIDC, Phase-IV, Ahmedabad, Gujarat - 382449.India.

 sales@veritoengineering.com  +91 76005 52286  079-90045766  www.veritoengineering.com